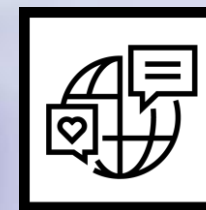


Czech Liaison Office for Education and Research in Brussels

National Information Day 2021
Czech University of Life Sciences Prague

18 October 2021

Denisa Fančová – Senior consultant for research
Bára Sobotková – Junior consultant for education



PODPOŘENO
PROJEKTEM
MŠMT MS2102

Transformation of CZELO



The end of the former grant of CZELO

Start of the new programming period 2021–2027

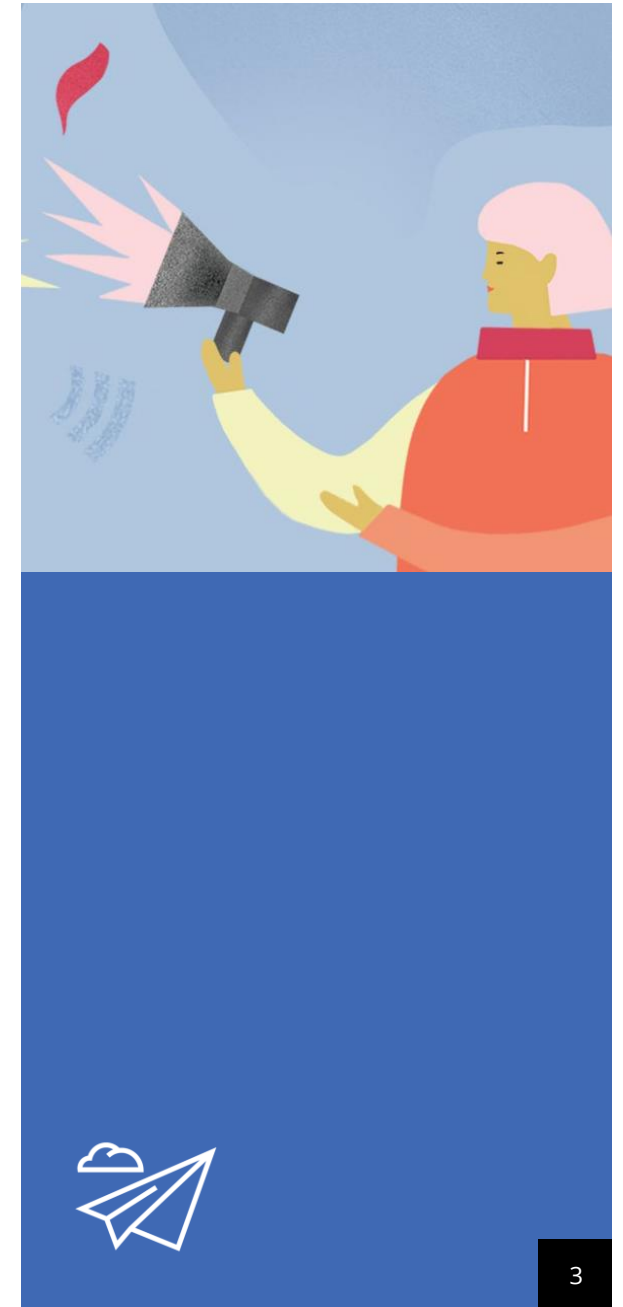
Enhanced synergies between the European Education Area
and European Research Area



Common agreement to transform the current CZELO from being solely
focused on research to expand its activities also to the area of the
international cooperation in education

Czech National Agency for International Education and Research (DZS)

- Publicly-funded organisation – under the competence of the Ministry of Education, Youth and Sports (MEYS)
- Central **umbrella national organisation for international education**, 21 programmes and networks
- **Erasmus+** (all sectors of education and training and youth) and **European Solidarity Corps** National Agency



CZELO 2021

- New address: **Rue Montoyer 23, Brussels**
- 5 employees
- Financially supported by a grant from MEYS (research) and by the DZS funds (education)
- Services provided free of charge
- Providing targeted and up-to-date information
- Overview of programmes, open calls, official and unofficial documents
- Individual consultations



CZELO 2021 – Our partners

IGLO Network
– Informal Group of
Liaison Offices for RDI in
Brussels

ACA
– Academic Cooperation
Association

Other Brussels-based
organisations

Central Czech
administration bodies,
Czech entities in Brussels

Universities, independent
public research
institutions, private
research companies,
publicly-funded research
organisations

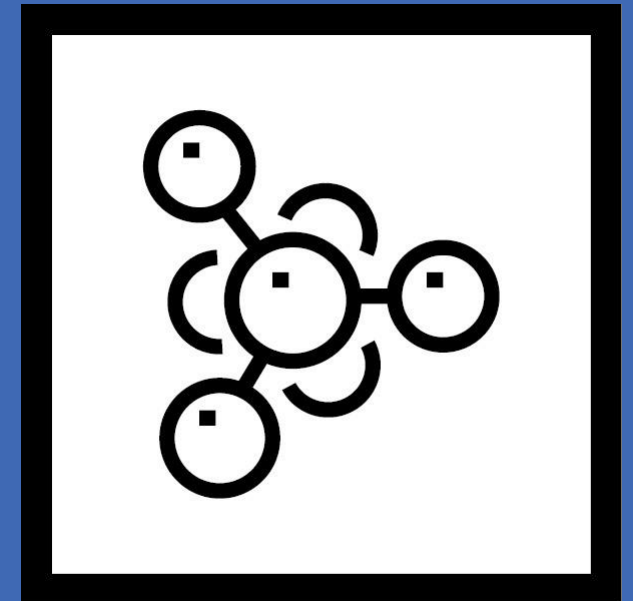
Local government bodies



CZELO 2021 – Research and development area

Continuation and further development of the main activities of CZELO

- Promoting Czech research institutions to Brussels-based partners and to representatives of the EU institutions
- Monitoring the European research policy developments
- Organisation of various events (brokerages, conferences, workshops and other)
- Facilitating meetings between the Czech research community and the relevant partners
- Support point to the Czech research community in Brussels
- Partner search
- Capacity building





V4 Training for project managers

22, 23 and 25 November 2021



Implementation of Seal of Excellence

End of November 2021



Science Café

November / December 2021



Webinar on opportunities for social sciences and humanities in Horizon Europe

6–7 December 2021



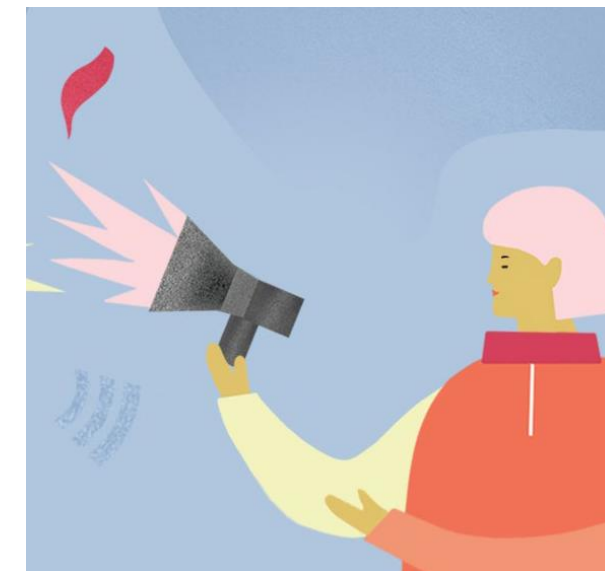
V4 Brokerage in space research

13 December 2021



Webinar on hydrogen in research

January 2022



Planned activities in the field of RDI



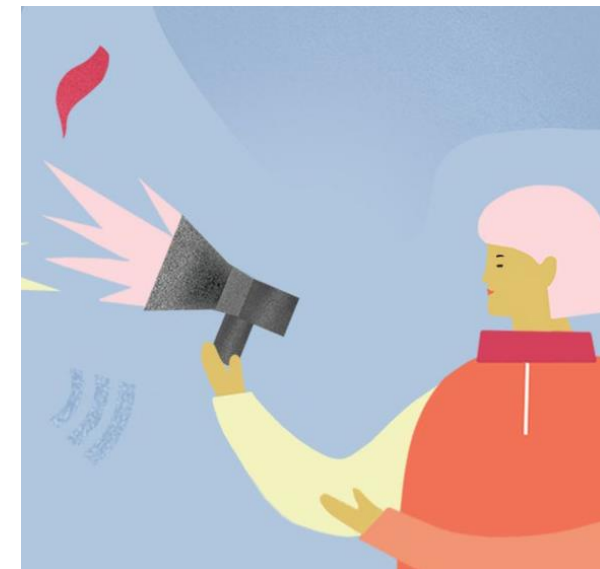
Synergies between research and educational areas

Focus on synergies between European research and European educational areas

Promotion of synergies within Czech research and educational community

Support and facilitating meetings and cooperation between European and Czech research and educational partners

Promotion and marketing of Czech education and research



Possible synergies: MSCA & Erasmus+

Synergies between the Marie Skłodowska-Curie Actions and Erasmus+ in the area of higher education

- New document by the European Commission
- Practical examples included

Why?

- **Mobility, training & career development** of individuals, including researchers
- Development of new **study and research programmes**
- Strong **international** dimension
- Strong collaboration with **non-academic sector**, industry, SMEs
- Around **70 % of beneficiaries** under the **MSCA** are HE institutions (= access to **Erasmus+** and other EU funding)





Possible synergies: MSCA & Erasmus+

MSCA Doctoral Networks	MSCA Postdoctoral Fellowships	MSCA Staff Exchanges	MSCA COFUND
Erasmus+ Mobility for HE Students and Staff	Erasmus+ Mundus Joint Master Degrees	Erasmus+ Capacity Building in HE	Erasmus+ Partnerships for Innovation
	Erasmus+ Partnerships for Cooperation	European Universities Initiative	

Example 1

- The networks developed through [Erasmus+ Capacity Building in HE](#) can be used as "stepping stones" for setting up doctoral and postdoctoral programmes under [Doctoral Networks](#), [COFUND](#) or collaborative projects under [Staff Exchanges](#)

Example 2

- Individual participants of [Erasmus+ mobility](#) can participate in the work of [MSCA research teams](#) (traineeship mobility, short-term physical mobility, staff mobility)
- [MSCA researchers](#) can participate in [Erasmus+ funded blended intensive programmes](#) as fellow learners/teachers (doctoral summer schools)

Example 3

- [Cooperation Partnerships in HE](#) can be used as "stepping stones" for setting up collaborative projects under [Staff Exchanges](#), doctoral and postdoctoral programmes under [Doctoral Networks](#) and [COFUND](#)
- And vice versa: organisations involved in [MSCA projects](#) can set up [Cooperation Partnerships in HE](#)
- [MSCA](#) and [Erasmus+](#) projects working on similar societal challenges can organize joint activities, training programmes, events etc.

CZELO 2021 – Education Area

- Monitoring of the European education policy developments
- Focus on [Erasmus+](#) centralised actions
 - managed by EACEA in Brussels
 - *Erasmus Mundus, Partnerships for Innovation, Capacity Building, Jean Monnet, Centres of vocational excellence, European Universities*
- Organisation of various events (conferences, [webinars](#) etc.)
- Promoting Czech educational institutions to Brussels-based partners and to representatives of the EU institutions
- Facilitating meetings between the Czech educational community and relevant partners
- Support point to the Czech educational community in Brussels





Děkujeme za pozornost.

**Czech Liason Office for Education
and Research (CZELO)**

Rue Montoyer 23, 1000 Brussels, Belgium

@ czelo@dzs.cz

www.czelo.cz

Dům zahraniční spolupráce (DZS)

Na Poříčí 1035/4, 110 00 Praha 1

☎ +420 221 850 100

@ info@dzs.cz

www.dzs.cz



[@czelobrussels](https://www.facebook.com/czelobrussels)
[@dumzahranicnispoluprace](https://www.facebook.com/dumzahranicnispoluprace)

[@dzs_cz](https://www.instagram.com/dzs_cz)

[CZELO Brussels](https://twitter.com/CZELO_Brussels)
[@dzs_cz](https://twitter.com/dzs_cz)

[@dzs_cz](https://www.linkedin.com/company/dzs_cz)



PODPOŘENO
PROJEKTEM
MŠMT MS2102