



# The support activities of the CZU in synergy with Technology Centre

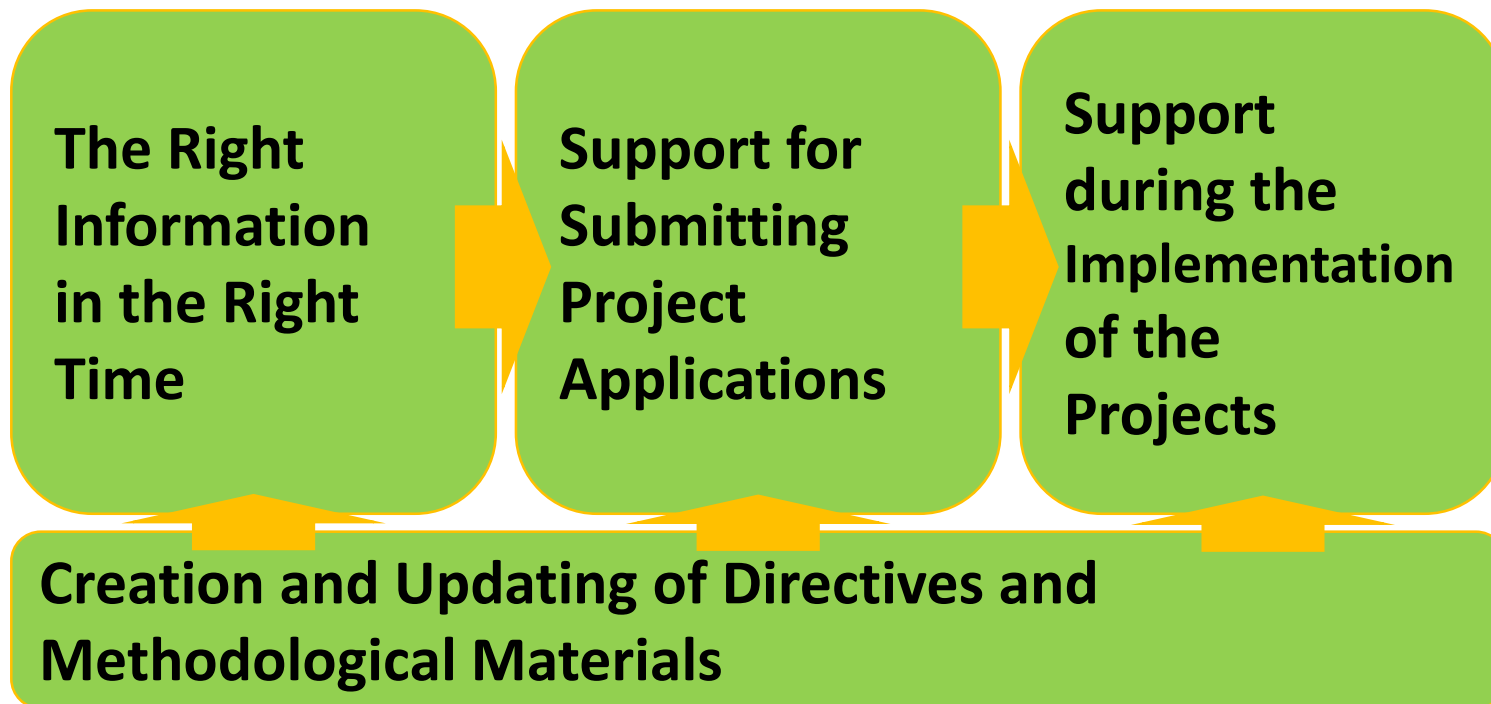


Czech University  
of Life Sciences Prague

University full of life

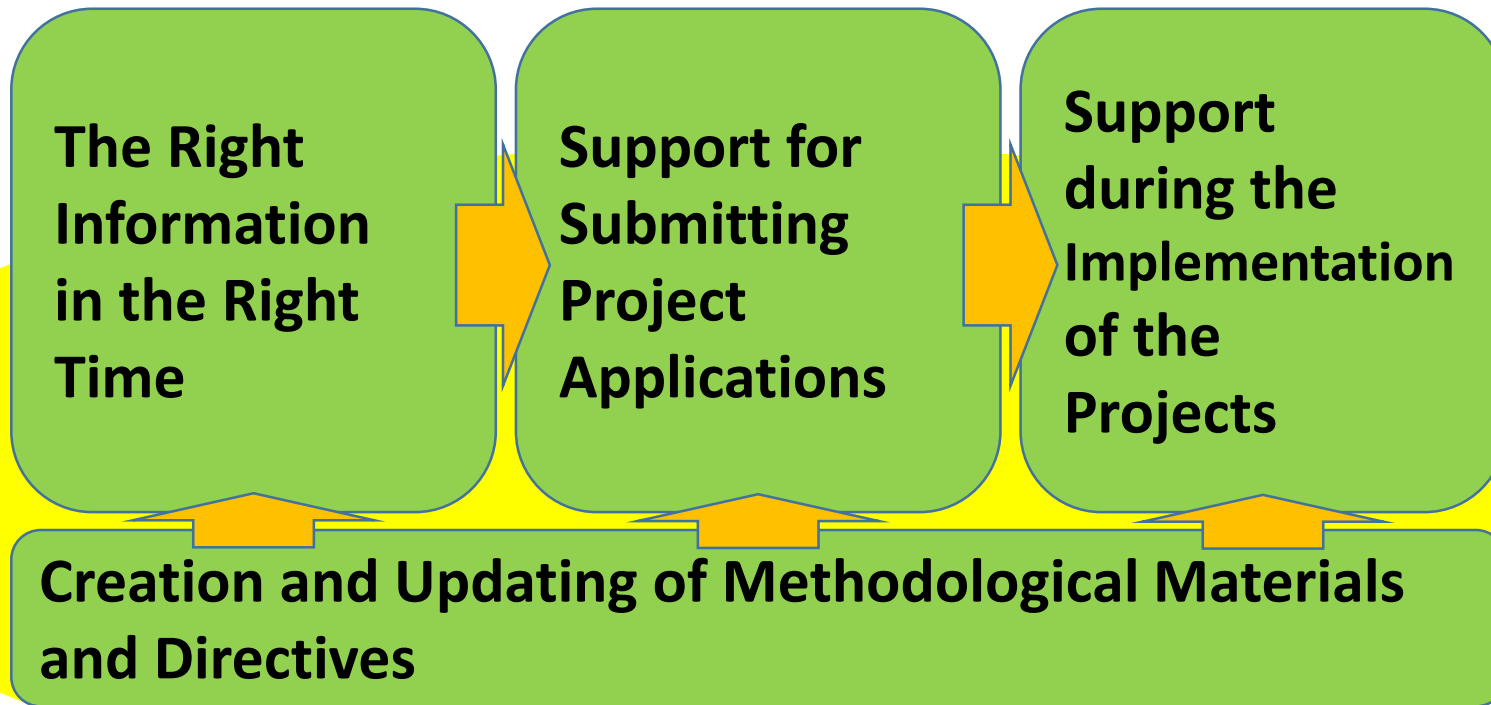
# How we can support scientists and researchers?

## How to Engage New Researchers into International Cooperation?



# How we can support scientists and researchers?

## How to Engage New Researchers into International Cooperation?



In cooperation with Technology centre CAS and ELLS universities



# How we can support scientists and researchers?

## Services for Project Applicants and Researchers

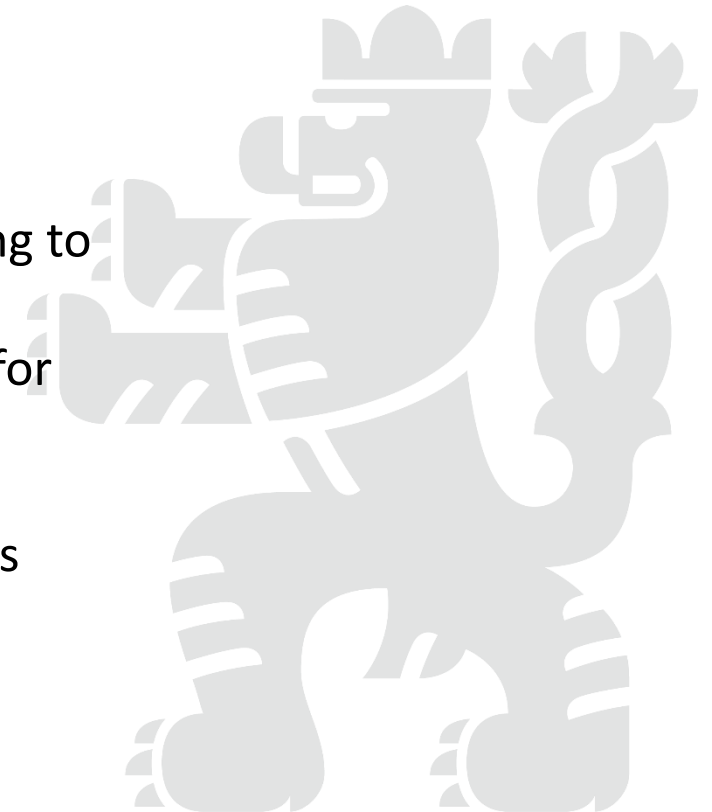
- **The Right Information in the Right Time**
  - General information about planned call via application Evidence projektu.
  - Regular information about the dates of current calls via the INTERNET (research.czu.cz), INTRANET (section News/Science, research and projects), application Evidence projektu and CZU NEWSLETTER, or through Project Centre representatives.
  - Information about brockering events, science weeks etc.
  - Internal seminars or invitation to the external seminars or workshops focused on actual calls.



# How we can support scientists and researchers?

## Services for Project Applicants and Researchers

- **Support for Submitting Project Applications**
  - Providing pre-filled-in parts of the application forms relating to the university as a whole.
  - Securing recent mandatory attachments on behalf of CZU for a project application from a current document database.
  - Securing signatures by a statutory representative. Upon agreement, securing of submission of a grant application as required by individual providers.
  - Individual methodological support.



# How we can support scientists and researchers?

## Services for Project Applicants and Researchers

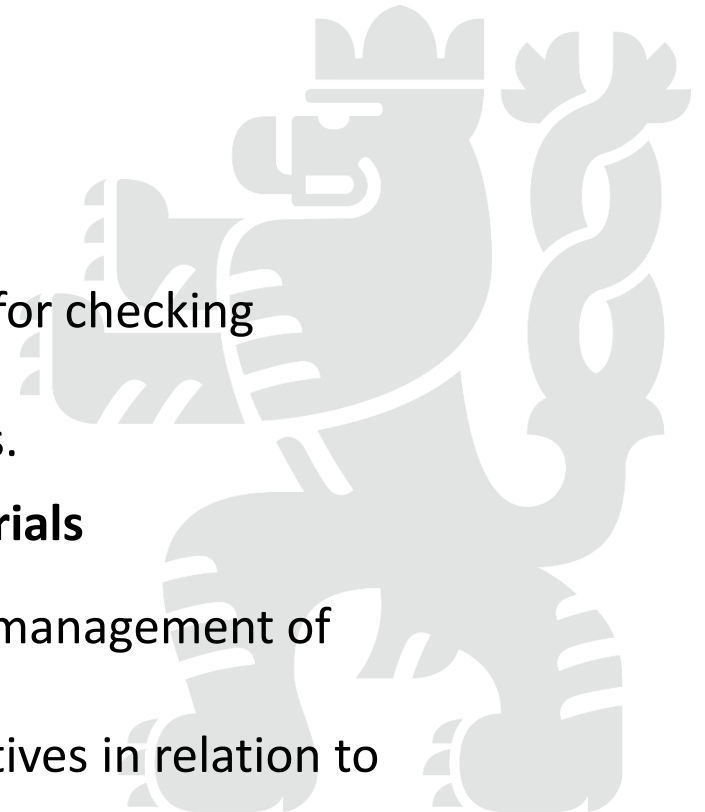
- **Support during the Project Approval Process**
  - Procedural support of securing the beginning of project implementation: legal advisory - check of the agreements, setting the financial parameters, personal costs.
- **Support during Submitting of Monitoring Reports**
  - Consultancy of financial reports, changes or special requests from the project coordinator / project officer.



# How we can support scientists and researchers?

## Services for Project Applicants and Researchers

- **Support during the Implementation of Inspections for Projects**
  - Organizational securing of the course of checks / audits.
  - Methodological support during preparation of documents for checking /audits on location
  - Support in case of deficiencies or formulation of objections.
- **Creation and Updating of Directives and Methodological Materials**
  - Preparation of methodological materials, e.g. for financial management of projects, esp. personal costs etc.
  - Collaboration in creating and updating the necessary directives in relation to statutory regulations and state administration bodies.

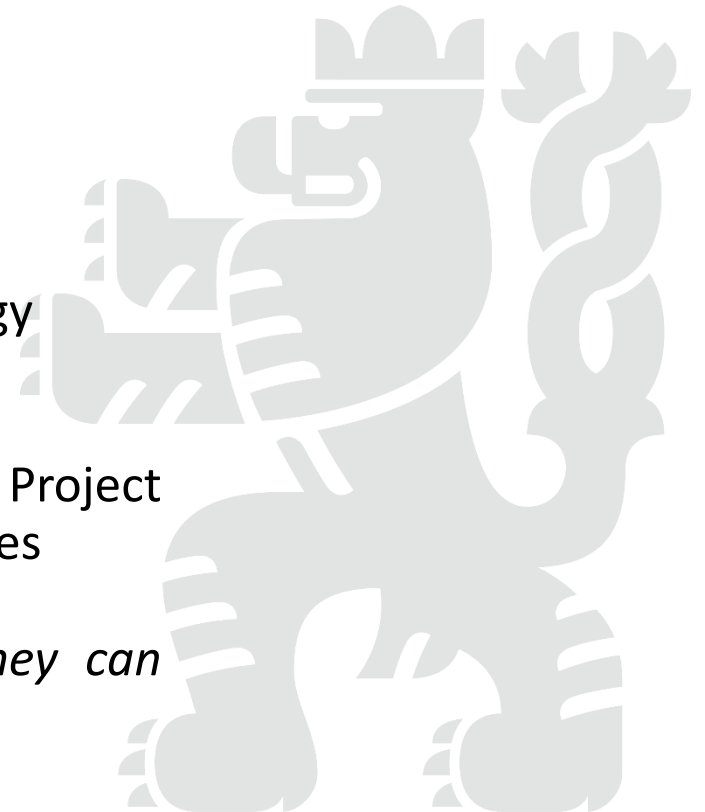


# How we can support scientists and researchers?

**In brief, we offer:**

- **The right information in the right time.**
- **The individual approach** based on the experiences and broad knowledge of us and our colleagues (also from Technology Centre CAS and other Czech or ELLS universities)
- **Sharing experiences** among Department for Development and Project Management at the Rectorate and Project Centers at the faculties

*We try to support the self confidence of the applicants that they can succeed*

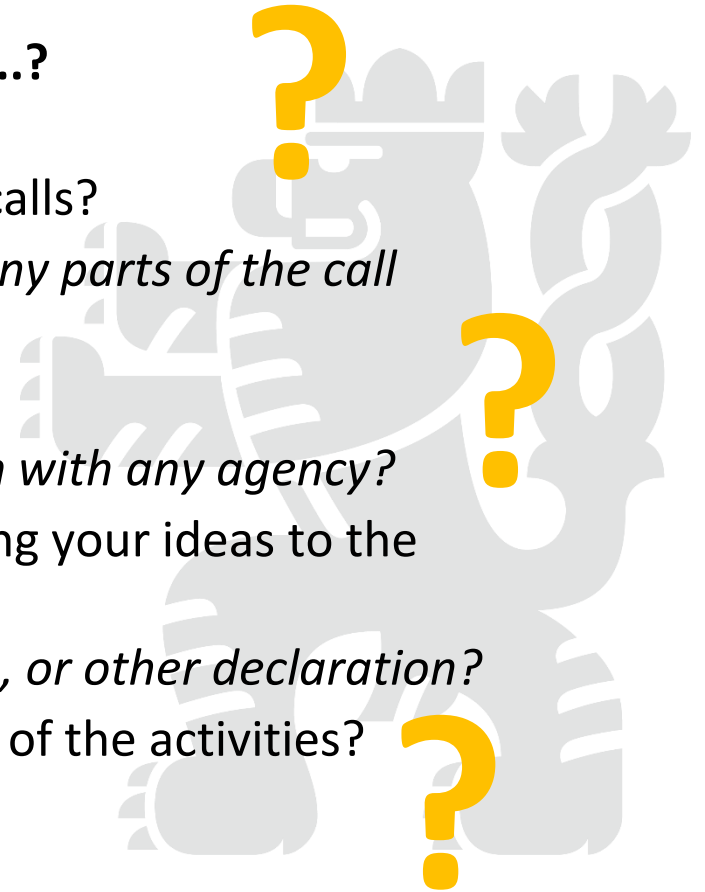




# How we can support scientists and researchers?

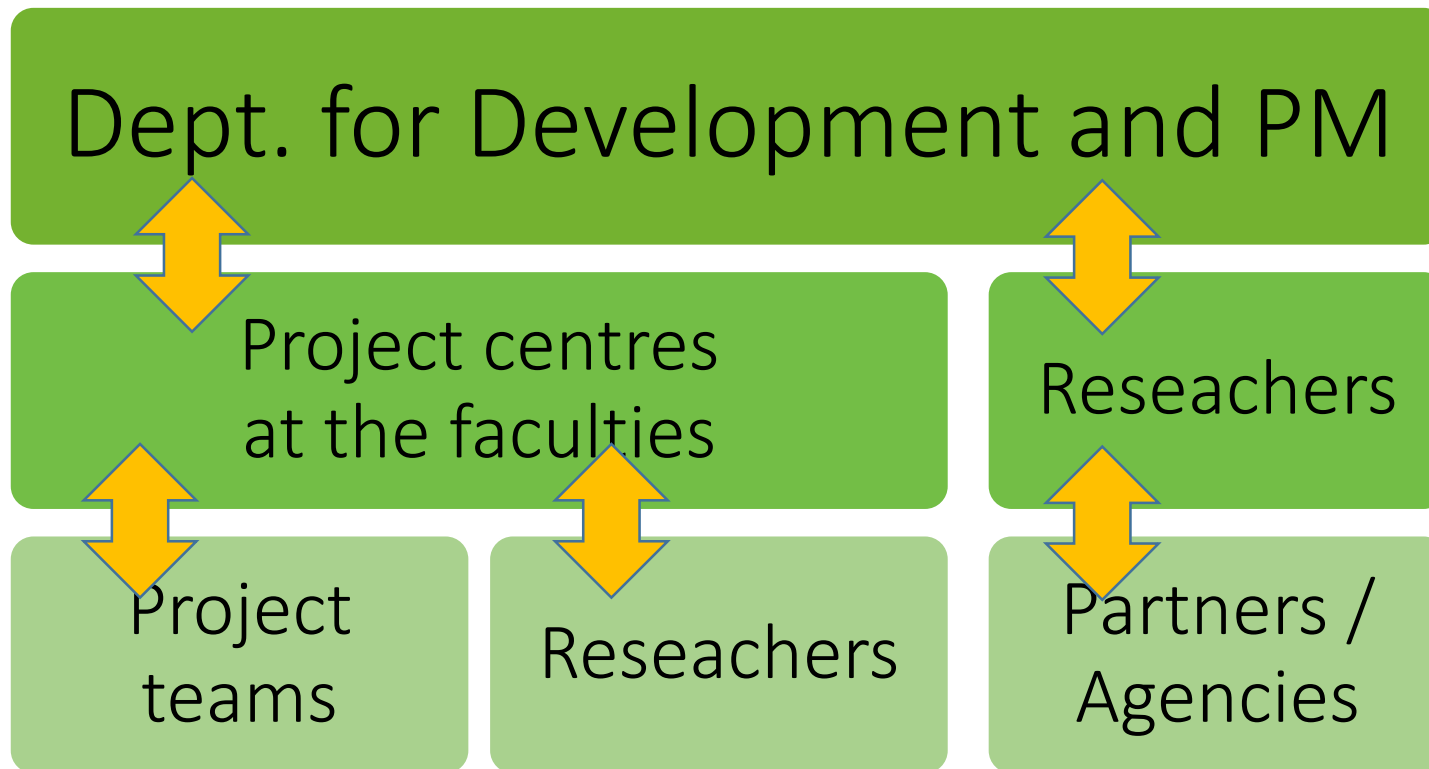
**We offer the individual approach: Do you want...? Or do you need...?**

- Explanation of the differences between internal and European calls?
- *Recommendation of the potential call/topics? "Translation" of any parts of the call description? Successful project from the similar call?*
- Contact the successful researcher or evaluator?
- *Preparation of your proposal with our advisory or in cooperation with any agency?*
- Consultancy of the budget and check your planned costs? Binding your ideas to the European strategies?
- *Description of the Data management plan, Gender equality plan, or other declaration?*
- Help with animating of the preparation team or with the design of the activities?



# How we can support scientists and researchers?

How we organize our activities?



Coordination, workshops, networking, common projects

Scouting new applicants, Individual support

Proposal writing, project execution



# How we can support scientists and researchers?

## How we cooperate with the Technology Centre and the other universities?

Technology Centre CAS

- Public seminars/ workshops
- Individual workshops
- Specific courses (ERC, PM)
- Common activities - NID
- Methodological support
- Useful contacts (succesfull reseachers, evaluators, potential partners)
- Information
- Publications
- Networking

Czech  
University of  
Life Sciences  
Prague

- Common workshops (Prague, Wien, Brussels, on-line)
- Common activities – position papers
- Useful contacts (succesfull reseachers, evaluators, potential partners)
- Information
- Networking

ELLS Universities

CZELO

ICA, DRC, Agrinatura



# How we can support scientists and researchers?

**Thank you for your attention**

Josef Beranek,  
[beranek@rektorat.czu.cz](mailto:beranek@rektorat.czu.cz)

head of the Dept. for Development and Project Management

[www.czu.cz/en](http://www.czu.cz/en)



# See you in Prague!



[study.czu.cz](http://study.czu.cz)  
[czu.cz/en](http://czu.cz/en)



[czuprague](https://www.facebook.com/czuprague)



[czuprague](https://www.instagram.com/czuprague)



Czech University  
of Life Sciences Prague