

# A competitive bioeconomy for a sustainable future

Virginia Puzzolo  
Head of Programme  
14 May 2024



# Table of contents

- **CBE JU - introduction**
- **CBE JU vs. Horizon Europe: similarities & differences**
  - Call 2024 topic overview & structure
  - CBE specific requirements (incl. IKOP)
  - Eligible costs
- **Proposal preparation**
  - Lessons learnt from past calls
  - Call 2024 timing
  - Tips & tricks on how to write a good proposal
  - Networking opportunities
- **Q&A**

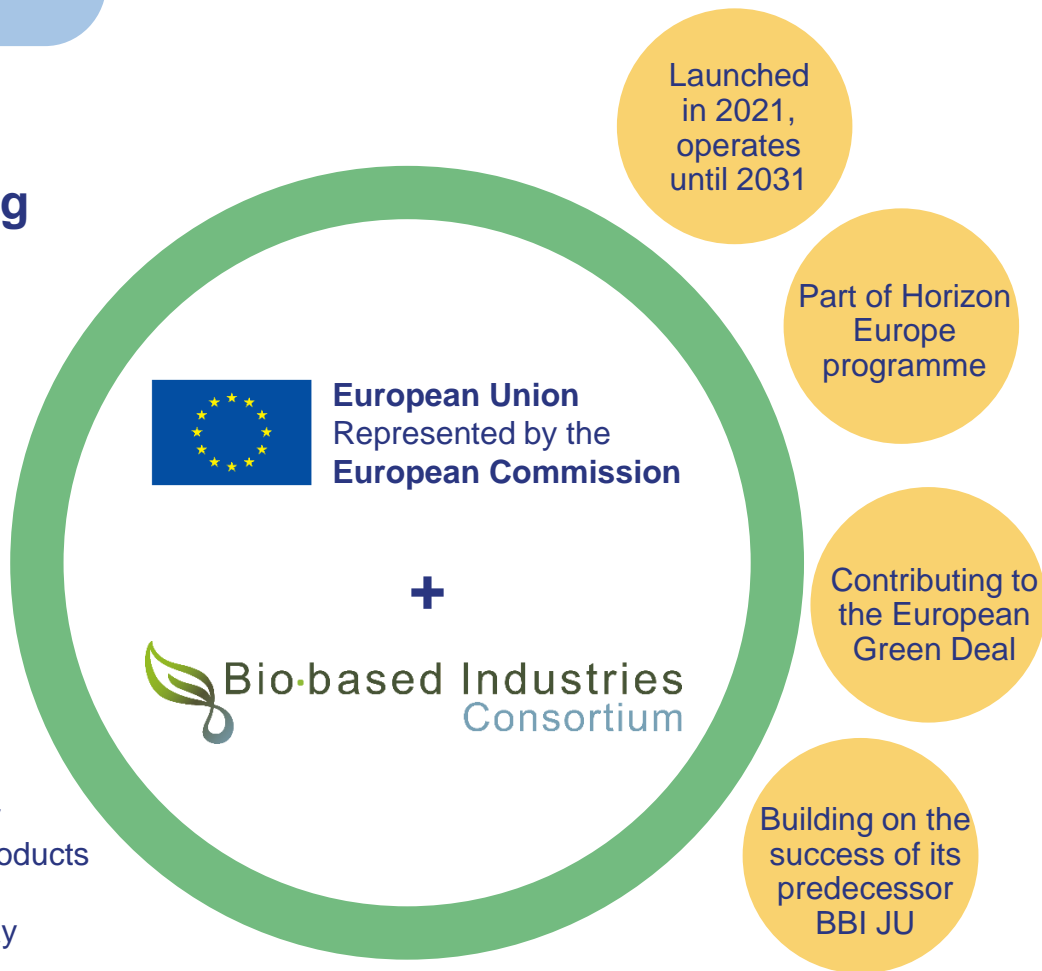
# The Circular Bio-based Europe Joint Undertaking

1

# Circular Bio-based Europe Joint Undertaking

€2 billion public-private initiative

CBE JU is funding projects that deliver bio-based solutions – materials and products made from waste and biomass – in an innovative, sustainable and circular way



## CBE JU general objectives



Accelerate the **innovation** process and development of bio-based innovative solutions

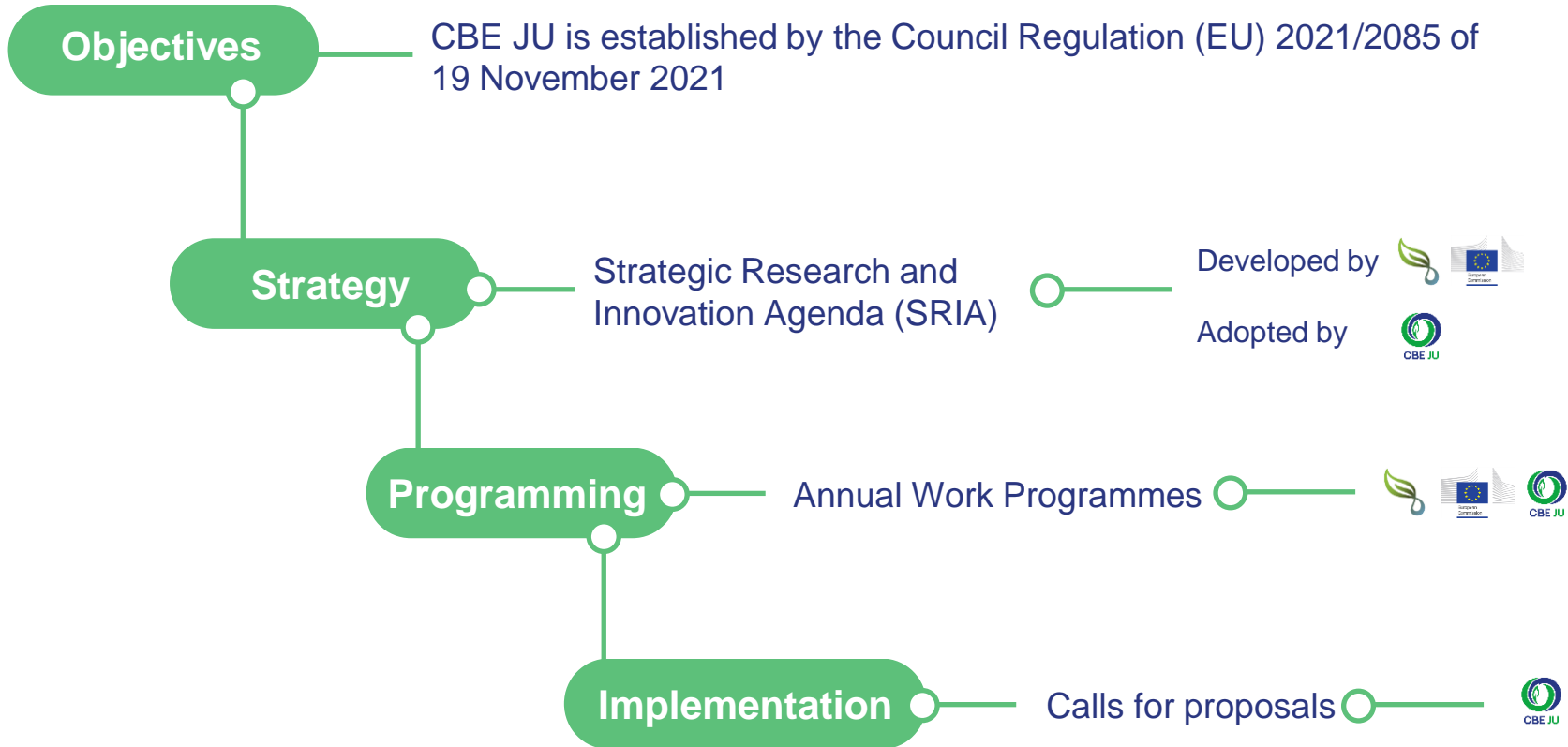


Accelerate **market deployment** of the existing mature bio-based innovative solutions

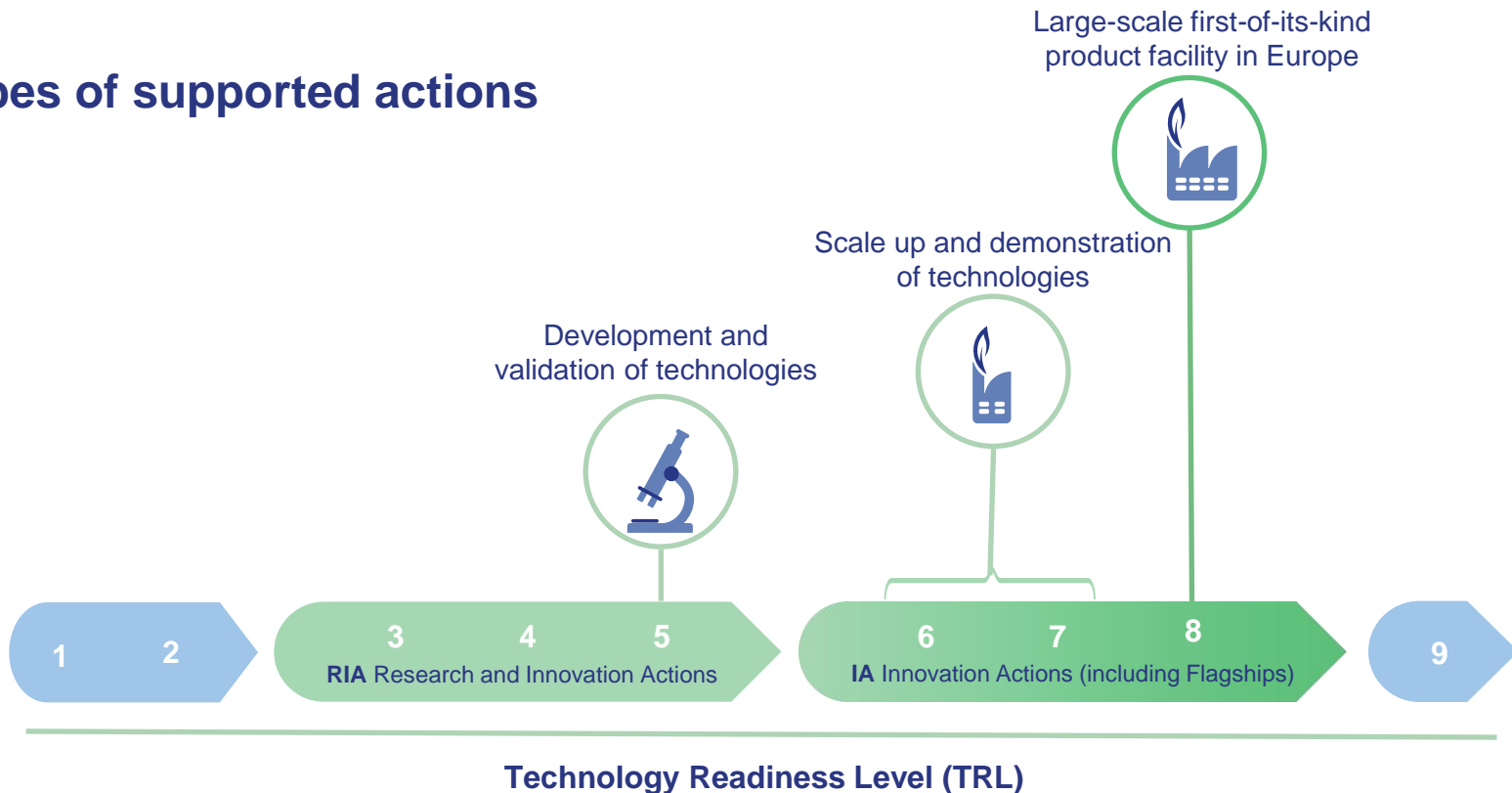


Ensure a high level of **environmental performance** of bio-based industrial systems

# From strategy to implementation



## Types of supported actions



**CSA: Coordination and Support Actions (no link with TRLs)**

## CBE JU portfolio – building on BBI JU:

2014-2022



**163**  
projects



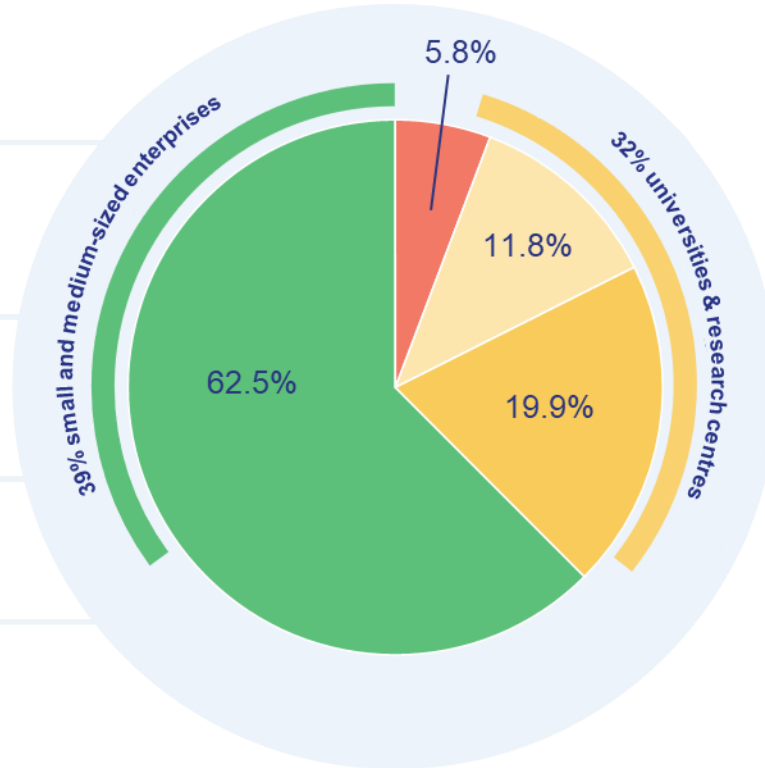
**1,198**  
beneficiaries



**€937 million**  
CBE JU  
funding



**39**  
countries



**CBE JU funding per type of beneficiary (unique)**

- Private companies
- Research organizations
- Higher education establishments
- Other

*Data: CORDA, May 2023*



# CBE JU-funded

 Flagship biorefinery

 Demonstration plant



# Czechia



## Opportunities for the bioeconomy

Socio-economic benefits

RURAL DEVELOPMENT

INCOME DIVERSIFICATION

JOB CREATION

Main resources in CBE JU projects



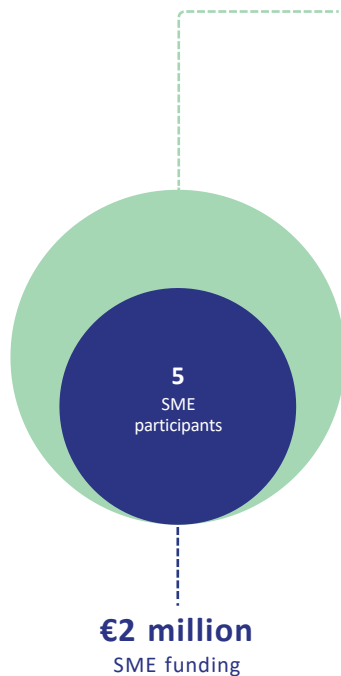
FORESTRY RESIDUES



AGRO RESIDUES

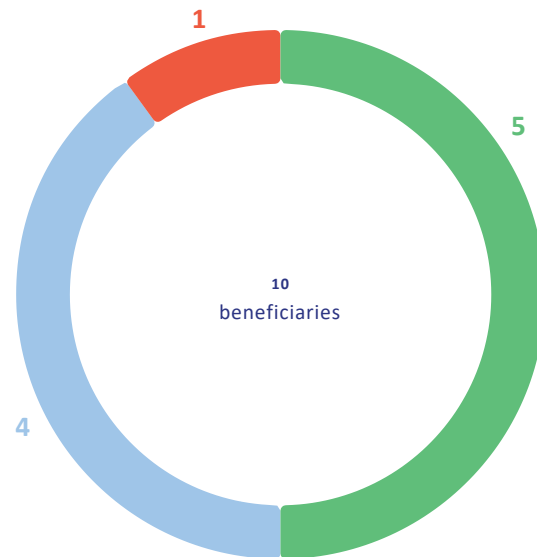
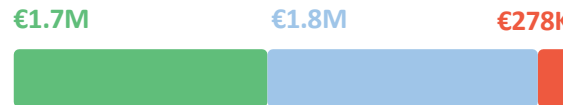


MUNICIPAL WASTE



Check all the projects in the country

€3.8 million  
CBE JU funding in Czechia



Private companies      Universities & research centres      Other

# Table of contents

- CBE JU - introduction
- **CBE JU vs. Horizon Europe: similarities & differences**
  - Call 2024 topic overview & structure
  - CBE specific requirements (incl. IKOP)
  - Eligible costs
- **Proposal preparation**
  - Lessons learnt from past calls
  - Call 2024 timing
  - Tips & tricks on how to write a good proposal
  - Networking opportunities
- **Q&A**

# CBE JU vs. Horizon Europe: similarities & differences

2

# 18 topics and their budget

Type of action	Topics HORIZON-JU-CBE-2024		Million EUR
IA- Flagship	IAFlag-01	Bio-based value chains for valorisation of sustainable oil crops	20
	IAFlag-02	Bio-based dedicated platform chemicals via cost-effective, sustainable and resource-efficient conversion of biomass	20
	IAFlag-03	Bio-based value chains for valorisation of sustainable natural fibre feedstock	20
IA	IA-01	Bio-based materials and products for biodegradable in soil applications	15
	IA-02	Sustainable microalgae as feedstock for innovative, added-value applications	15
	IA-03	Enlarging the portfolio of commercially produced “Safe and Sustainable by design” (SSbD) solvents	15
	IA-04	Circular and SSbD bio-based construction & building materials with functional properties	15
	IA-05	Selective and sustainable (co)-production of lignin-derived aromatics	15
	IA-06	Innovative bio-based adhesives and binders for circular products meeting market requirements	15
	IA-07	Innovative conversion of biogenic gaseous carbon into bio-based chemicals, ingredients, materials	15
RIA	R-01	Valorisation of polluted/contaminated wood from industrial and post-consumer waste streams	7
	R-02	Biotech routes to obtain bio-based chemicals/materials replacing animal-derived ones	7
	R-03	Sustainable, bio-based alternatives for crop protection	10
	R-04	SSbD bio-based coating materials for applications under demanding and/or extreme conditions	7
	R-05	Innovative bio-based food/feed ingredients	7
CSA	S-01	New forms of cooperation in agriculture and the forest-based sector	4
	S-02	Mobilise inclusive participation in bio-based systems and supporting the CBE JU widening strategy and its action plan	3
	S-03	Supporting the CBE JU Deployment Group on Primary Producers	3

# Call topic structure

## HORIZON-JU-CBE-2024-XX-NN Topic title

<b>Type of action</b>	Research and Innovation Action
<b>Indicative budget</b>	The total indicative budget for the topic is EUR <b>10</b> million
<b>Expected EU contribution per project</b>	It is estimated that a contribution of EUR <b>5</b> million would allow these outcomes to be addressed appropriately. Nonetheless, this does not preclude submission and selection of a proposal requesting different amounts
<b>TRL</b>	TRL <b>4-5</b> at the end of the project
<b>Link to CBE JU Specific Objectives</b>	1.1: Increase the intensity of cross-disciplinary research and innovation activities
<b>Link to CBE JU SRIA Strategic Priorities</b>	1.1.2: Develop innovative production systems in the bio-based industry 1.1.3: Develop innovative bio-based products
<b>CBE JU KPIs</b>	4.5 Number of products with improved life cycle environmental performance 5.1 Number of innovative products that are biodegradable, compostable, recyclable, reused or upcycled (circular-by-design) 5.2 Number of projects developing circular production practices (incl. industrial & industrial urban symbiosis) 6 Increase innovative bio-based outputs and products

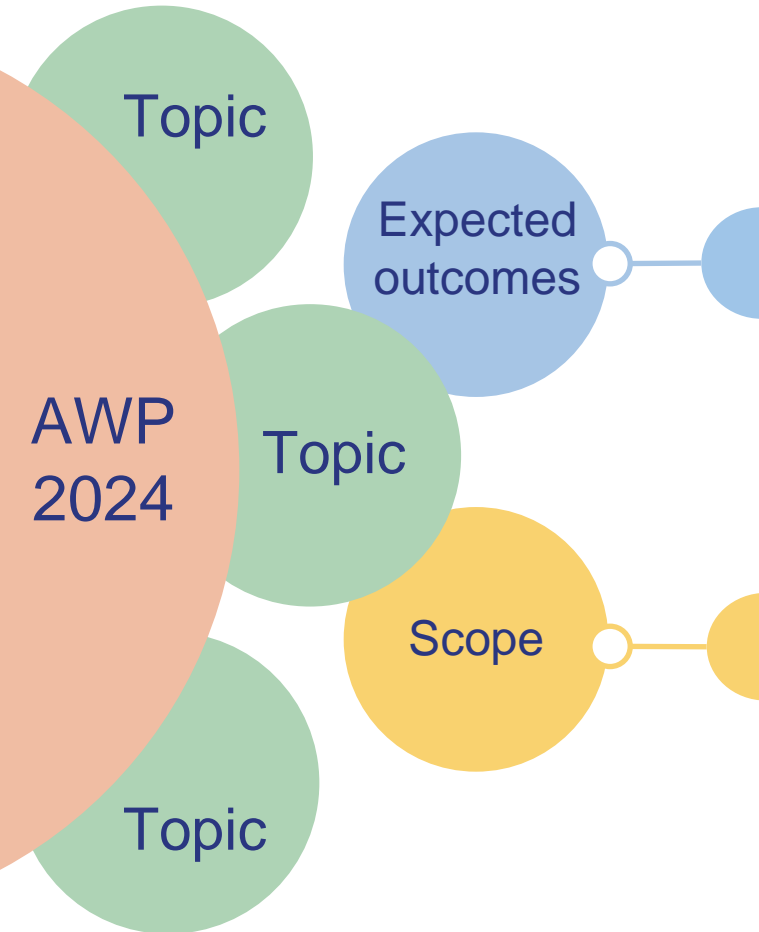
Topic

Topic

Topic

AWP  
2024

# Call topic structure



## *The 'change' to be achieved*

- Provides a broad description of what is the **impact** to be achieved by the project
- The **dissemination and exploitation** of future research results are vital for the impact`

## *The 'problem'*

- Identifies the aspects of the **challenge** that needs to be tackled
- Specifies a **perimeter** to the problem described
- Does not specify the expected solutions to the problem, nor the approach to be taken

# Horizon Europe + CBE requirements

## Horizon Europe (HE) rules

- Eligibility
- Admissibility
- General annexes

## HE evaluation criteria

- Excellence
- Impact
- Implementation

## CBE Annual Work Programme 2024

- Topics
- **Specific requirements**
- Budget

HE Programme Guide

HE Online Manual

HE General Annexes

HE Annotated Model Grant Agreement



EU Grants  
AGA – Annotated Model Grant Agreement  
2021 Funding Programme 2021-2027



Part A Part B

## Proposal structure

Horizon Europe Application forms (Part A)

Topic:  
Type of action:  
Type of Model Grant Agreement:  
Proposal number:  
Proposal acronym:

Table of contents:

Part B: technical description

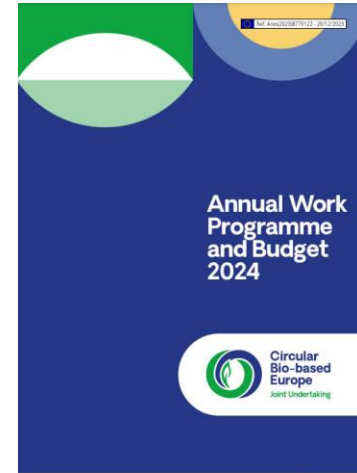
1. Excellence

1.1 Operational and academic excellence

1.2 Methodology

1.3 Impact

1.4 Budget





Specific CBE JU requirement	Type of action	Where to include it in Part B
<b>Feedstock sourcing (eligibility condition)</b>	RIA and IA, incl. FLAG	Part B – (Y/N) question
<b>Feedstock sustainability requirements</b>	RIA and IA, incl. FLAG	Part B – (Y/N) question
<b>Description of feedstock</b>	RIA and IA, incl. FLAG	Part B – 1.2 Methodology
<b>Environmental performance - Ex-ante assessment</b> <ul style="list-style-type: none"> <li>• Identification of environmental issues</li> <li>• Estimation of environmental sustainability performance,</li> <li>• Estimation of carbon removal potential</li> </ul>	RIA and IA, incl. FLAG	Part B – 1.2 Methodology
<b>Environmental sustainability and circularity - Ex-post assessment</b> <ul style="list-style-type: none"> <li>• Dedicated task for RIA</li> <li>• Dedicated task or WP (LCA) for IA non-FLAG</li> <li>• Dedicated task or WP (LCSA) for FLAG</li> </ul>	RIA IA- non FLAG FLAG	Part B – 3.1 Workplan and resources

Specific CBE JU requirement	Type of action	Where to include it in Part B
<b>Multi-actor approach (MAA)</b>	IA, incl. FLAG RIA and CSA, when specified	Part B – 1.2 Methodology
<b>Economic aspects:</b> <ul style="list-style-type: none"> <li>Economic viability</li> <li>Business case and business model</li> <li>Business plan</li> </ul>	RIA IA, incl. FLAG FLAG	Part B – 2.2 Measures to maximise impact – D& E&C FLAG: Annex (Business plan)
<b>Digital technologies</b>	RIA and IA, incl. FLAG	Part B – 1.2 Methodology
<b>Cross-disciplinary aspects and Social Sciences and Humanities (SSH)</b>	All types of actions	Part B – 1.2 Methodology
<b>Recommendations to stakeholders</b>	IA, incl. FLAG	Part B – 3.1 Workplan and resources

# Similarities and **differences** with Horizon Europe



## Funding rate

- RIA: 100%
- IA: **60%** (100% non-profit)
- CSA: 100%



## Award criteria

- RIA, IA & CSA: Excellence, Impact, Implementation
- IA: + Impact **Ability to ensure 15% (IA) or 20% (IAFlag) of in-kind contribution to operational activities (IKOP)**  
= minimum IKOP percentage



## Page limit

- RIA: **50 p.**
- IA: **70 p.**
- CSA: 30 p.



## Scoring thresholds

- Excellence: 3/5
- Impact: **4/5**
- Implementation: 3/5
- Total: **11/15**



## Score weighting factor

- IA: Impact x **1,5**

# In-kind contribution to operational activities (IKOP)

**IKOP** = Total eligible costs – Requested EU contribution (of private members)

In CBE JU, the only private member is the **Bio-based Industries Consortium (BIC)**.

→ **Minimum percentage of IKOP** must be reflected in the budget of partners that are BIC members.

Example 1: IA Flagship Criterion: $\geq 20\%$ IKOP	BIC member	Industry / Academia	Total eligible costs	Funding rate	Requested EU contribution	IKOP
Coordinator ( <b>BIC member</b> )	Y	industry	€ 7,000,000	60%	€ 4,200,000	€ 2,800,000
Beneficiary 1	N	academia	€ 590,000	100%	€ 590,000	
Beneficiary 2 ( <b>BIC member</b> )	Y	industry	€ 5,000,000	60%	€ 3,000,000	€ 2,000,000
Beneficiary 3	N	industry	€ 3,000,000	60%	€ 1,800,000	
Beneficiary 4	N	academia	€ 800,000	100%	€ 800,000	
<b>TOTAL</b>			<b>€ 16,390,000</b>		€ 10,390,000	<b>€ 4,800,000</b>

$$\text{Percentage IKOP} = \frac{\text{€ 4,800,000}}{\text{€ 16,390,000}} = 29,3\% > 20\% \quad \text{👍}$$

BIC has set up an open and fast procedure to become a BIC member: <https://biconsortium.eu/membership>

# In-kind contribution to operational activities (IKOP)

**IKOP** = Total eligible costs – Requested EU contribution (of private members)

In CBE JU, the only private member is the **Bio-based Industries Consortium (BIC)**.

→ **Minimum percentage of IKOP** must be reflected in the budget of partners that are BIC members.

Example 2: IA Criterion: $\geq 15\%$ IKOP	BIC member	Industry / Academia	Total eligible costs	Funding rate	Requested EU contribution	IKOP
Coordinator ( <b>BIC member</b> )	Y	industry	€ 2,000,000	60%	€ 1,200,000	€ 800,000
Beneficiary 1	N	academia	€ 590,000	100%	€ 590,000	
Beneficiary 2	N	industry	€ 1,500,000	60%	€ 900,000	
Beneficiary 3	N	industry	€ 3,000,000	60%	€ 1,800,000	
Beneficiary 4	N	academia	€ 800,000	100%	€ 800,000	
<b>TOTAL</b>			<b>€ 9,090,000</b>		€ 6,010,000	<b>€ 1,280,000</b>

$$\text{Percentage IKOP} = \frac{\text{€1,280,000}}{\text{€ 9,090,000}} = 14,1\% < 15\% \quad \text{👎}$$

BIC has set up an open and fast procedure to become a BIC member: <https://biconsortium.eu/membership>

# IKOP vs BIC membership

- **IKOP?**

- Total eligible costs minus total requested funding (of BIC members)
- Only applicable to Innovation Actions (IAs) incl. Flagships
- CBE JU evaluation subcriterion (15% or 20% threshold)

- **BIC membership**

- CBE JU will check BIC membership during evaluation...
- ...via an Annex to the proposal: 1 pdf file with all 'BIC membership certificates' or BIC members involved in the consortium
- BIC membership certificates to be requested to BIC via <https://bic.elisca.app/membership/certificate/registration>
- When building your consortium, you might encounter organisations interested in becoming a BIC member (and who could 'boost' your IKOP)
- 'Project membership': temporary membership option, (only) relevant for CBE JU Calls: the organisation will become a BIC member if their proposal is successful

# CBE JU cost eligibility

- **CBE JU fully follows the Horizon Europe cost eligibility rules**
- **Cost categories**
  - A. Personnel costs (employees, natural person under direct contract, seconded persons, SME owners not receiving a salary,...)  
*New as of 1 May 2024:* option to certify [personnel unit costs](#)
  - B. Subcontracting costs
  - C. Purchase costs (travel & subsistence; Equipment (typically depreciated); other goods, works & services)
  - D. Other cost categories
  - E. Indirect costs (= 25% of categories A, C, and sometimes D; but not B. Subcontracting)
- **Most relevant info sources**
  - [Annotated model grant agreement](#), art. 6 (“eligible and ineligible costs and contributions”): includes definitions *and* examples
  - CBE JU’s FAQ for applicants Call 2024 (also on CBE JU website)

# Table of contents

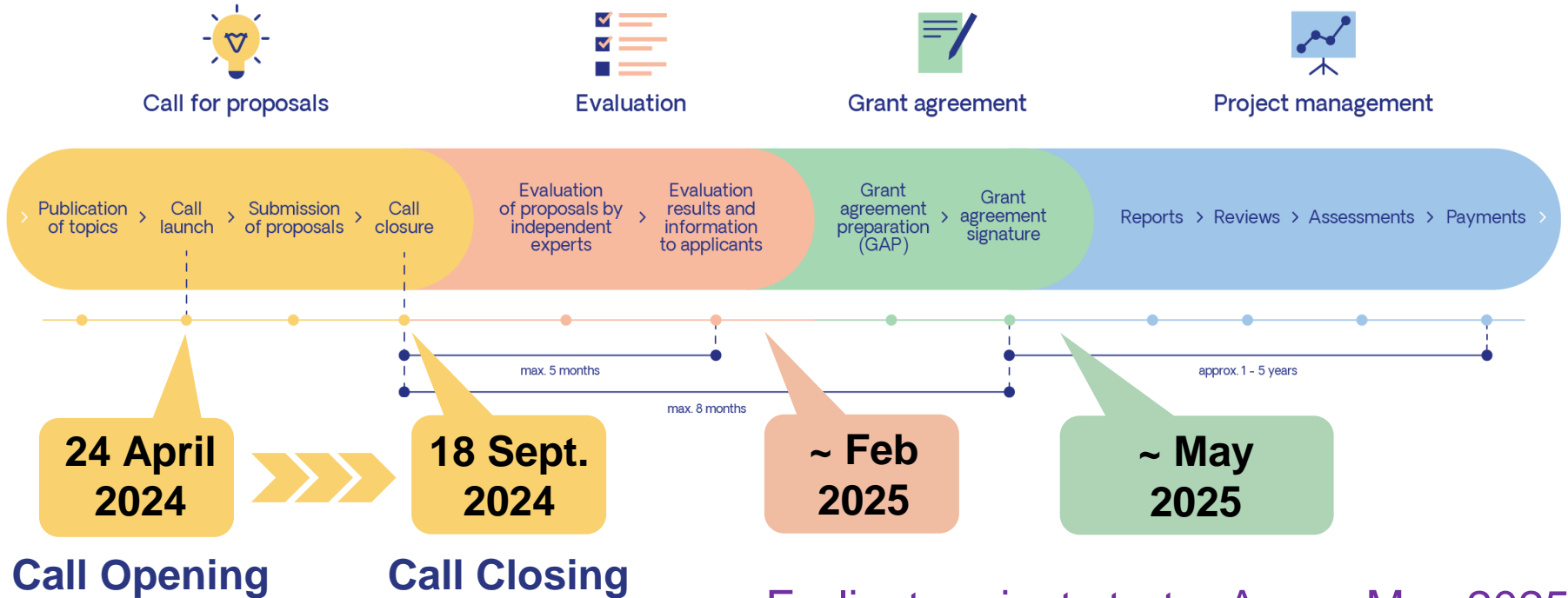
- CBE JU - introduction
- CBE JU vs. Horizon Europe: similarities & differences
  - Call 2024 topic overview & structure
  - CBE specific requirements (incl. IKOP)
  - Eligible costs
- **Proposal preparation**
  - Lessons learnt from past calls
  - Call 2024 timing
  - Tips & tricks on how to write a good proposal
  - Networking opportunities
- Q&A



CBE JU Call 2024:  
Proposal preparation

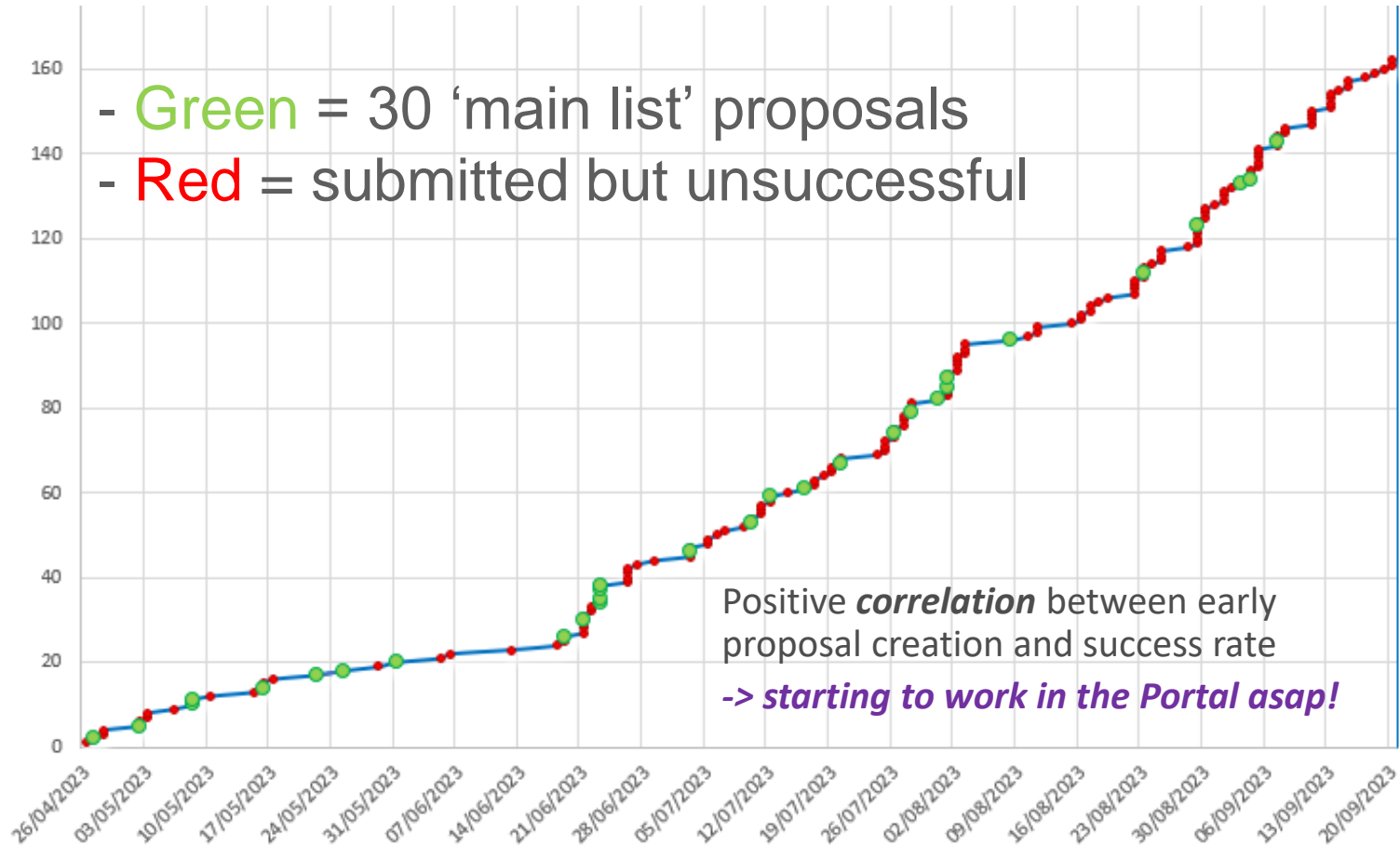
3

# Proposal preparation



Earliest project start = Apr or May 2025

# Call 2023 submission statistics (2/3)



# Horizon Europe scoring principles

**0** The proposal **fails to address the criterion** or cannot be assessed due to missing or incomplete information.

**1** **Poor.** The criterion is inadequately addressed, or there are **serious inherent weaknesses**.

**2** **Fair.** The proposal broadly addresses the criterion, but there are **significant weaknesses**.

**3** **Good.** The proposal addresses the criterion well, but a number of **shortcomings** are present.

**4** **Very Good.** The proposal addresses the criterion very well, but a small number of **shortcomings** are present.

**5** **Excellent.** The proposal successfully addresses all relevant aspects of the criterion. Any **shortcomings** are **minor**.

**CBE JU  
evaluation  
thresholds: 3/5  
or 4/5 (impact)**

## Top 5+1 most common shortcomings ordered by frequency

1. **Impact** – expected outcomes (= bullet points in topic text)
  2. **Implementation** – work plan (incl. Tasks, deliverables,...)
  3. **Excellence** – ambition level, (going beyond) SOTA, TRLs
  4. **Implementation** – risk & mitigation measures
  5. **Excellence** – scope (bullet points in topic text)
  6. (For RIAs: **Impact** – economic viability check)
- The 3 'biggest' evaluation elements*

## Top 5 most common weaknesses ordered by frequency

1. Excellence – methodology
2. Excellence – ambition level, (going beyond) SOTA, TRLs
3. Excellence – scope (bullet points in topic text)
4. Impact – expected outcomes (= bullet points in topic text)
5. Implementation – work plan

*You can't hide  
a bad idea...*

Equally interesting: what **ISN'T** there...the IA IKOP evaluation subcriterion

# Aim for total “Topic eclipse”

Topic<sup>+</sup>

Proposal

Topic<sup>+</sup> Proposal

Proposal

Topic<sup>+</sup> = Topic text + HE requirements + CBE specific requirements

every single word in  
topic text counts!



Proposal template Part B: Technical description

Form with various fields and sections, including a table for 'Description No.', 'Description', and 'Status'.

Part B

every specific requirement  
element counts!

# A good and convincing CBE JU proposal



Ensure that the proposed work is within the **scope of the topic**



Demonstrate that the idea is **ambitious** and goes beyond the **state of the art**



Your **methodology** must take into account open science practices and interdisciplinarity (+ gender dimension, if applicable)



Show clearly how the proposed work could contribute to the **outcomes and impacts** described in the work programme (the pathway to impact)



Describe the planned measures to **maximise the impact** of the project ('plan for dissemination & exploitation including communication activities')



Demonstrate the quality of the **implementation**, including work plan, resources and participants



Read carefully the **AWP2024** and the **Strategic Research and Innovation Agenda (SRIA)**, for a good understanding of the context and long-term objectives of CBE JU !!!



## Networking opportunities

- Funding & tender Opportunities Portal (partner search announcements)
- BIC networking (<https://biconsortium.eu/membership> )
- CBE JU networking platform (<https://www.cbe.europa.eu/networking-platform> )
  - Open since mid-February 2024, will remain open until (at least) call closure on 18 Sept 2024
  - Different services: 'Find & be found'
    - Partner search & expressing interest in on or more topics;
    - Presentation of project ideas
    - Showcasing / offering your expertise
    - Direct messaging & scheduling B2B meetings
    - Registration for the CBE JU info days

# Two main sources of information

The screenshot shows the 'F&T Portal Online Manual' website. On the left is a navigation menu with categories like 'Participant Register', 'Grants', 'Procurement', 'Prizes', 'Financial instruments', 'Working as an expert', and 'Help'. The main content area is titled 'Grants' and features a 'My Area — User account and roles' button. Below this, there are two main sections: 'Applying for funding' and 'Evaluation & Grant signature'. The 'Applying for funding' section contains a flowchart with steps: 'Find a call', 'Find partners', 'Register an organisation', and 'Submit a proposal'. The 'Evaluation & Grant signature' section contains a flowchart with steps: 'Admissibility and eligibility check', 'Evaluation of proposals', 'Grant preparation', and 'Grant signature'.

<https://webgate.ec.europa.eu/funding-tenders-opportunities/display/OM/Online+Manual>

The screenshot shows the CBE JU website. At the top, there is a search bar and a user profile icon. The navigation menu includes 'About', 'Apply for funding', 'Projects', 'Achievements', and 'News & Events'. A dropdown menu is open under 'Apply for funding', with 'Open calls for proposals' highlighted in a red box. Below the menu, there is a large green banner for the 'CBE JU photo competition 2024 for submission #CBEImpact'. The banner text reads: 'All projects are invited to submit their photos and videos by 20 April.' and 'Discover rules & criteria'. To the right of the banner is a circular image of a camera. The 'Open calls for proposals' menu item is highlighted with a red box.

<https://www.cbe.europa.eu/open-calls-proposals>  
(Incl. FAQ for applicants, link to networking platform,...)

## Proposal pre-check service available

Applicants from [eligible countries](#) can make use of the **pre-check proposal service** offered by the NCP\_WIDERA.NET project. [Apply for the pre-check](#).

This service is part of the [CBE JU widening participation strategy](#) actions. More information on the [NCP\\_WIDERA.NET portal](#).

# Questions & Answers





**Circular  
Bio-based  
Europe**  
Joint Undertaking

Contact us

[info@cbe.europa.eu](mailto:info@cbe.europa.eu)  
[www.cbe.europa.eu](http://www.cbe.europa.eu)

Follow us



Subscribe



 Bio-based Industries  
Consortium



Co-funded by  
the European Union