



CBE JU National Information Day 2025

Experiences of Czech CBE JU project participants

Veterinary Research Institute



Ildikó Csölle Putzová - technology transfer and project support

March 17, 2025, Prague

Veterinary Research Institute



KEY PERFORMANCE INDICATORS

207 EMPLOYEES



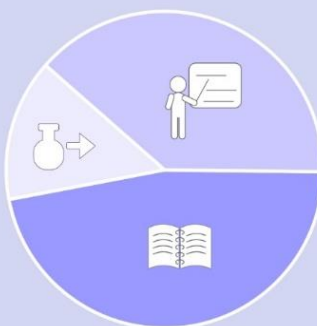
14 Research groups

valid patents 14
42 valid utility models

51 PROJECTS

R&D Results 2024

- Publications
- Applied results
- Other results



- One of the 4 most successful public research institutions in the long term according to the number of participation in international projects;
- One of the 4 institutions that have participated in all of FP from the 1994;
- Currently involved in three ongoing projekt in Horizon projects.
- assoc. member of BBI Consorcium



HORIZON-JU-CBE-2022,
Granting authority: Circular Bio-based Europe Joint Undertaking

New sustainable proteins for food, feed and non-food bio-based applications

Duration: 6/2023 – 6/2027

Estimated budget of **€ 5,043,847.50**

significant in-kind contribution (15%) by all SMEs of the Consortia

Consortium - strong multi-actor approach involving **15 partners from 9 different European countries:**

- providers of technology (4 RTDs – 27%),
- industrial partners (10 SME – 67%)
- consumer-oriented partner (1 NGO – 6%)

Coordinator: TECNALIA - center of applied research and technological development in Spain



HORIZON EUROPE
2021-2027



The project aims:

- to provide Single Cell Proteins (microalgae, insect, bacteria & fungal) alternative high-quality protein to food, feed and non-food biobased applications with a **CIRCULAR & ZERO WASTE** perspective in their **obtention (by using agrofood wastes)**;

To:

- reduction of at least 30% of **GHG emissions assigned** to InnoProtein proteins and by 20% of production cost vs proteins obtained by a conventional process
- reduce protein **European dependence of third countries** offering unconventional protein sources (e.g. soya)
- opportunities and **delocalized production in EU**;



HORIZON EUROPE
2021-2027



Expected outputs:

- **Food applications:** drink and food formulations for the general population including and validated with in vitro and in vivo studies
- **Feed applications:** feed formulations validated in vivo in pig, poultry and trout
- **Non-food bio-based applications (insect and fungal):** with proteins with poor quality for food/feed applications): plastic-free cutlery and biostimulants



Veterinary Research Institute - WP leader - Protein market applications

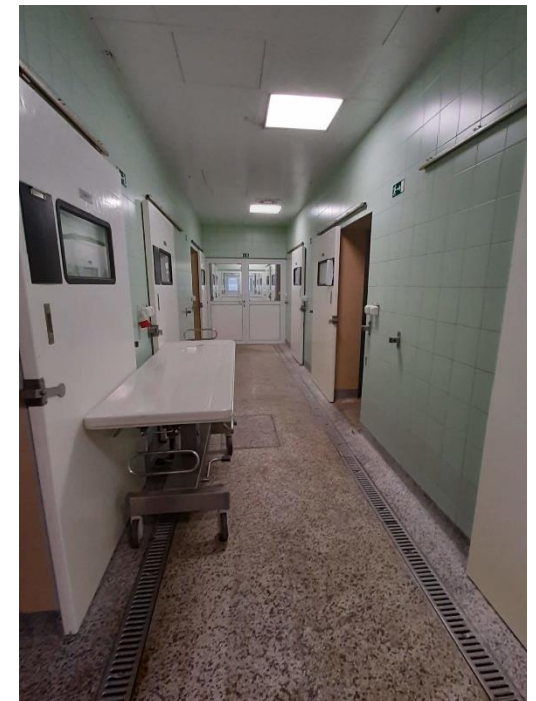
The role of VRI in the project – WP9 leader, management, dissemination

- In vivo studies based on animal models (mouse models for food applications);
- Validation of in vivo feed application (feed applications pig, trout, poultry);
- and relevant laboratory analyses concerning zoo technical and animal health aspects

Veterinary Research Institute - WP leader - Protein market applications

Independent testing site using different infectious and non-infectious animal models:

- accredited multifunctional facilities and infectious disease stables with high-end equipment and level;
- All laboratory analyses needed to perform in vivo and in vitro experiments, also in GLP mode.





Experience thanks to the project in this call:

- New contacts and collaboration in a multidisciplinary consortium;
- The opportunity to see new technologies by visiting specialized raw material processing sites;
- New view of the circular economy from a manufacturing perspective;
- Awareness of the crucial importance of public opinion on the topic;
- Awareness of the importance of taking into account all the advantages and disadvantages of circular economy policies

Our take on this perspective:

- + using waste to create something with higher added value;
- + employing local people with positive impact on employment, taxes, GDP;
- + reducing the environmental footprint of long distance transport - therefore shortening supply chains;
- building a new production chain usually involves significant investments;
- production is often associated with higher energy consumption;
- this usually results in a higher price of the final product.



Thank you for your attention.

Wish you successful participation in this interesting and promising perspective.



<https://innoprotein.eu/>